

TOWN OF FORT ERIE OFFICIAL PLAN

FORT ERIE LAND USE PLAN

LEGEND

LAND USE DESIGNATIONS

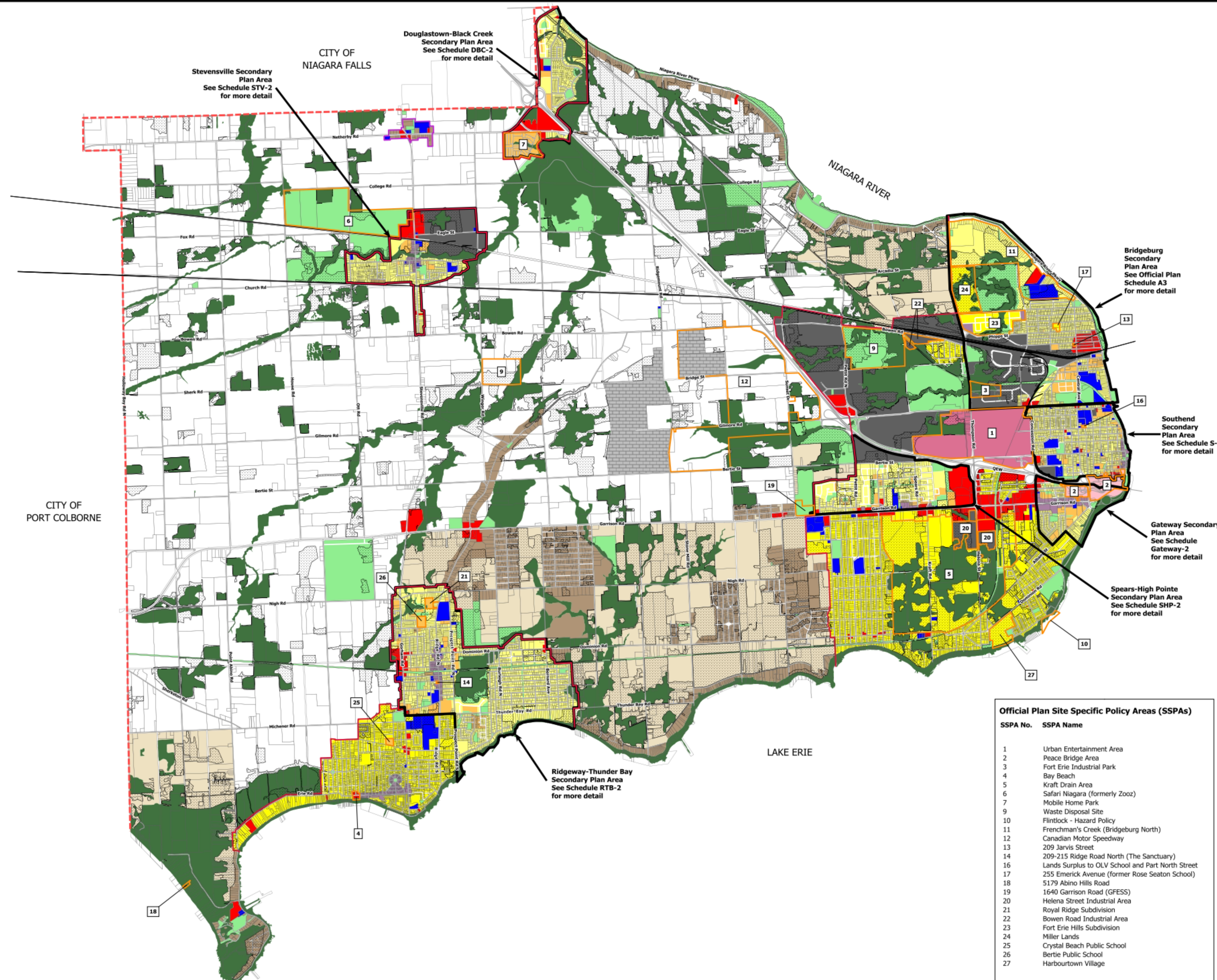
- Agricultural
- Commercial
- Core Mixed Use
- Environmental Conservation
- Environmental Protection
- Extractive Industrial
- Institutional
- Industrial
- Low Density Residential
- Medium-High Density Residential
- Open Space
- Peace Bridge
- Rural
- Rural Residential
- Urban Entertainment Centre
- Urban Residential

OTHER INFORMATION

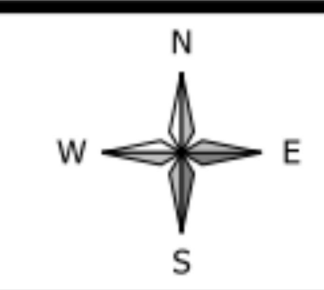
- Municipal Boundary
- Urban Boundary
- Hamlet Boundary
- Secondary Plan Boundary
- Site Specific Policy Areas (SSPAs)
- 1 Site Specific Policy Area (SSPA) Number

Official Plan Site Specific Policy Areas (SSPAs)

SSPA No.	SSPA Name
1	Urban Entertainment Area
2	Peace Bridge Area
3	Fort Erie Industrial Park
4	Bay Beach
5	Kraft Drain Area
6	Safari Niagara (formerly Zoo)
7	Mobile Home Park
9	Waste Disposal Site
10	Flintlock - Hazard Policy
11	Frenchman's Creek (Bridgeburg North)
12	Canadian Motor Speedway
13	209 Jarvis Street
14	209-215 Ridge Road North (The Sanctuary)
16	Lands Surplus to OLV School and Part North Street
17	255 Emerick Avenue (former Rose Seaton School)
18	5179 Abino Hills Road
19	1640 Garrison Road (GFESS)
20	Helena Street Industrial Area
21	Royal Ridge Subdivision
22	Bowen Road Industrial Area
23	Fort Erie Hills Subdivision
24	Miller Lands
25	Crystal Beach Public School
26	Bertie Public School
27	Harbourtown Village



PLANNING & DEVELOPMENT SERVICES



REVISED AND MODIFIED:
May 31, 2019

SCALE: 1:32,000

DRAWN BY: DV

SCHEDULE

A