

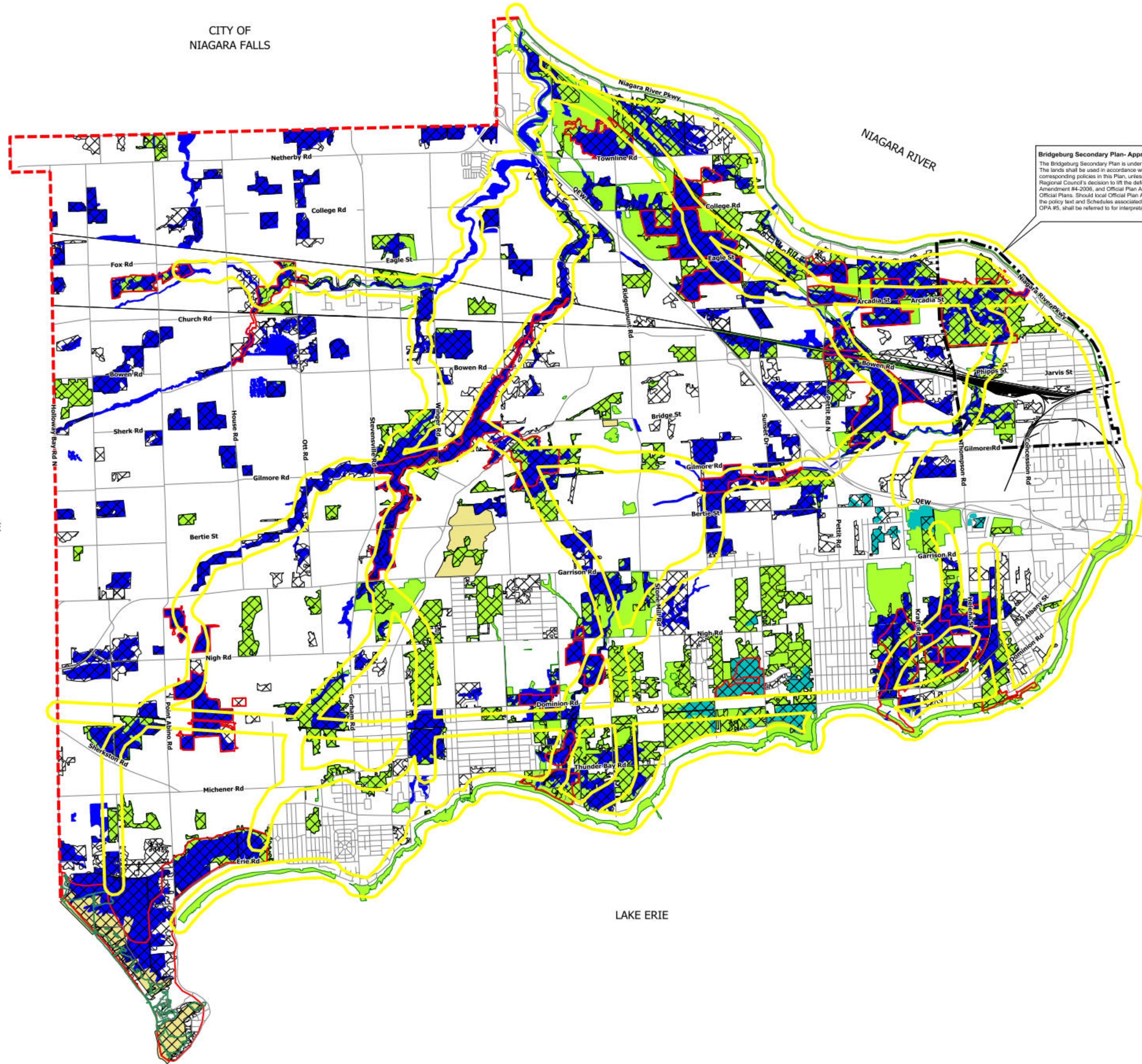
# TOWN OF FORT ERIE OFFICIAL PLAN

## NATURAL HERITAGE FEATURES

### LEGEND

- Provincially Significant Wetlands
- Areas of Natural and Scientific Interest
- Dune Protection Area
- Locally Significant Wetlands
- Environmentally Sensitive Areas
- Woodlands over 2 Hectares
- Significant Natural Areas
- Environmental Corridors
- Municipal Boundary
- Secondary Plan Boundary

**Bridgeburg Secondary Plan- Approved by Regional Council. (Under Appeal)**  
 The Bridgeburg Secondary Plan is under appeal to the Ontario Municipal Board (OMB). The lands shall be used in accordance with the land use designations on Schedule A and corresponding policies in this Plan, unless the Ontario Municipal Board (OMB) approves Regional Council's decision to lift the deferral, and approves Part 1 of Regional Policy Plan Amendment #4-2006, and Official Plan Amendments # 5 and #5 to the Town of Fort Erie Official Plans. Should local Official Plan Amendment (OPA) #5 be approved by the OMB, the policy text and Schedules associated with Section 4.15 of this Plan, which reflect OPA #5, shall be referred to for interpretation and implementation of this Plan.



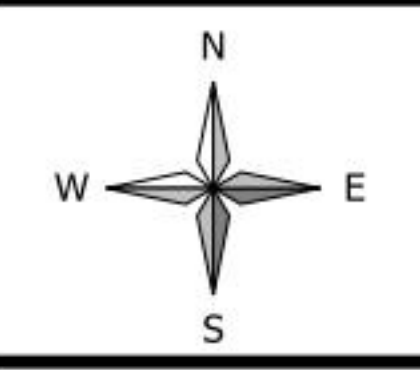
CITY OF  
NIAGARA FALLS

CITY OF  
PORT COLBORNE

LAKE ERIE



COMMUNITY & DEVELOPMENT SERVICES



REVISED AND MODIFIED:  
October 19, 2011

SCALE: 1:35,000

DRAWN BY: DH / TVB

## SCHEDULE

# C